

# MONTHLY MEMBERSHIP PROGRESS REPORT

District 3231A2

Results as of: 6/30/2024

GMT:

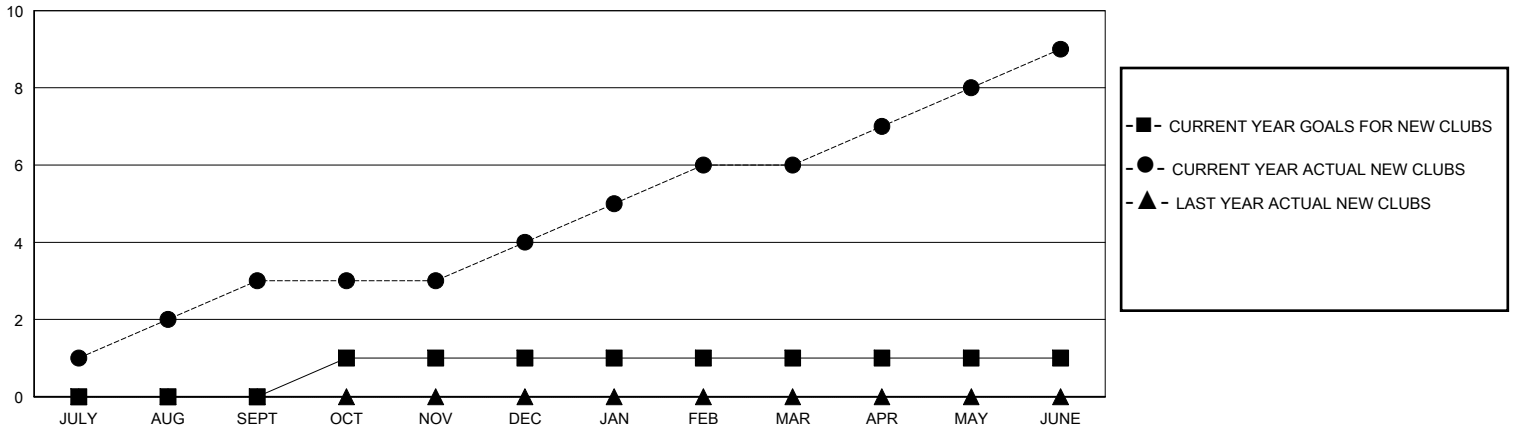
LOCATION INDIA

GMT CA

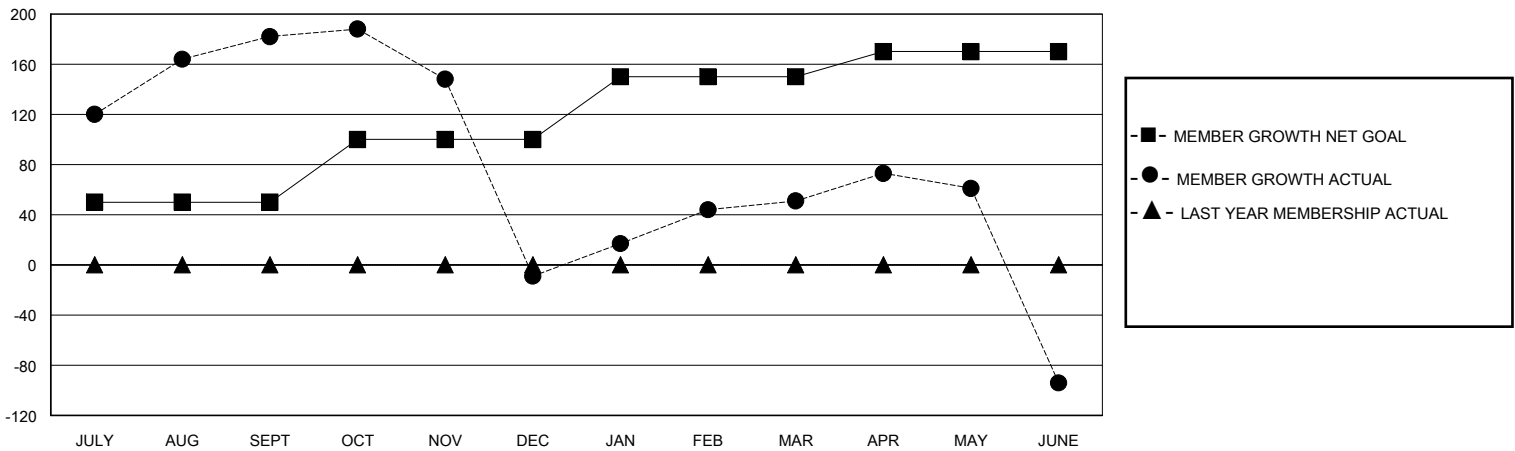
Clubs			
RESULTS FOR 2023-2024			
QUARTER	NEW CLUB GOAL	NEW CLUBS	DROPPED CLUBS
JULY/AUG/SEPT	0	3	2
OCT/NOV/DEC	1	1	1
JAN/FEB/MAR	0	2	1
APR/MAY/JUNE	0	3	0

Members			
RESULTS FOR 2023-2024			
QUARTER	MEMBER GROWTH NET GOAL	MEMBER GROWTH ACTUAL	DROPPED MEMBERS ACTUAL (including transfers)
JULY/AUG/SEPT	50	281	87
OCT/NOV/DEC	50	66	255
JAN/FEB/MAR	50	73	9
APR/MAY/JUNE	20	102	241

GOALS AND ACTUAL NEW CLUBS CUMULATIVE



GOALS AND ACTUAL MEMBERS CUMULATIVE



DROPPED CLUBS: 4	54 CLUBS OF 72 ADDED 1 OR MORE NEW MEMBERS	<b>GENDER DISTRIBUTION</b> MALE 1,384 (61.51%) FEMALE 866 (38.49%)
<b>DROPPED MEMBERS</b> DECEASED 10 CLUB CANCELLED 26 OTHER 556 TOTAL 592	<a href="#">CLICK HERE FOR CUMULATIVE MEMBERSHIP DATA</a>	TOTAL FAMILY UNIT MEMBERS 1,133 FAMILY MEMBERS PAYING HALF DUES 608